



# HOISTS & WINCHES

## Electric Chain Hoists

### EC Hook & Lug Suspension Models

**COFFING EC Models** - High performance hoists engineered for heavy duty industrial service. Designed for safety, the EC incorporates mechanical load brake, motor brake, and overload clutch as standard.

- **CAPACITIES & LIFTS** - Rated loads from 1/4 to 5 Tons, with 10,15, and 20 - foot standard lifts. Other lifts available. Standard push button drop is 4 feet less than lift.
- **VOLTAGE & MOTOR OPTIONS** - 115/230, 208 - single phase; 230/460, 208, 220/380, 575- three phase. 60 hertz standard, 50 hertz available. Two-speed motors available (3 to 1 speed ratio).
- **SUSPENSION OPTIONS** - Rigid or swivel top hook, lug, plain, geared, and motorized trolley available.
- **STANDARD FEATURES** - Mechanical Load Brake, Multiple Disc Motor Brake, Ergonomic Designed Push Button Station, Five-Pocket Load Sheave, Limit switches, Solid State Starting Switch, Panel Plate, Chain End Stop assembly, Overload Clutch, Helical Gearing and Oil-Bathed Transmission.
- **SMALL FRAME DESIGN** - Features housings of cast aluminum alloy construction for minimum weight. Engineered and designed for use with motors up to 1 HP.
- **LARGE FRAME DESIGN** - Features load bearing housings of ductile iron construction for maximum strength. Non-load bearing housings of cast aluminum alloy for minimum weight. Engineered and designed for use with higher torque 2 and 3 HP three phase motors.
- **DURABLE CONSTRUCTION** - Built in compliance with ASME/ANSIB30.16 and CSA standards.
- **ACCESSORIES & OPTIONS** - Full line available to meet a variety of applications.
- **LIFETIME WARRANTY**



HOISTS & WINCHES

Capacity		Model Number	Frame Size*	Number of Chains	Motor HP	Lift Speed (FPM)		Headroom (in-)	Housing Dimensions			Net Weight (lbs)**
(lbs)	(tons)					Single	Two		H	W	L	
500	1/4	EC-0516	S	1	1/4	16	5.3	16 7/8	8	11 5/8	23 3/8	100
500	1/4	EC-0532	S	1	1/2	32	10.7	16 7/8	8	11 5/8	23 3/8	108
500	1/4	EC-0564	S	1	1	64	21.3	16 7/8	8	11 5/8	23 3/8	116
1000	1/2	EC-1009	S	1	1/4	9	3	16 7/8	8	11 5/8	2 3/8	104
1000	1/2	EC-1016	S	1	1/2	16	5.3	16 7/8	8	11 5/8	23 3/8	106
1000	1/2	EC-1032	S	1	1	32	10.7	16 7/8	8	11 5/8	23 3/8	118
2000	1	EC-2004	S	2	1/4	4	1.3	18 1/4	8	11 5/8	23 3/8	116
2000	1	EC-2008	S	2	1/2	8	2.7	18 1/4	8	11 5/8	23 3/8	116
2000	1	EC-2012	S	1	1	12	4	16 7/8	8	11 5/8	23 3/8	114
2000	1	EC-2016	S	1	1	16	5.3	16 7/8	8	11 5/8	23 3/8	118
2000	1	EC-2032	L	1	2	32	10.7	23	10 7/8	14 13/16	31 3/16	295
2000	1	EC-2048	L	1	3	48	16	23	10 7/8	14 13/16	31 3/16	302
4000	2	EC-4006	S	2	1	6	2	18 15/16	8	11 5/8	23 3/8	127
4000	2	EC-4008	S	2	1	8	2.7	18 15/16	8	11 5/8	23 3/8	133
4000	2	EC-4016	L	1	2	16	5.3	23	10 7/8	14 13/16	31 3/16	295
4000	2	EC-4024	L	1	3	24	8	23	10 7/8	14 13/16	31 3/16	302
6000	3	EC-6005	S	3	1	5	1.7	23 1/4	8	12	26 3/8	200
6000	3	EC-6010	L	2	2	10	3.3	27 3/8	10 7/8	14 13/16	31 3/16	340
6000	3	EC-6016	L	2	3	16	5.3	27 3/8	10 7/8	14 13/16	31 3/16	347
8000	4	EC-8008	L	2	2	8	2.7	27 3/8	10 7/8	14 13/16	31 3/16	345
8000	4	EC-8012	L	2	3	12	4	27 3/8	10 7/8	14 13/16	31 3/16	352
10,000	5	EC-10005	L	3	2	5	1.7	27 7/8	10 7/8	14 13/16	31 3/16	393
10,000	5	EC-10008	L	3	3	8	2.7	27 7/8	10 7/8	14 13/16	31 3/16	393

\* S = Small frame hoist, parallel mounted, single or three phase. L = Large frame hoist, cross mounted, three phase only.  
 \*\* For 10 ft. lift, top hook suspension and lug suspension units.  
 Note: For complete dimensional data, refer to Coffing Dimensional Data book.



## JLC Top Hook and Lug Suspension



**COFFING JLC Models** - Designed for industrial duty performance. Compact in size, the JLC features a multiple disc motor brake, overload clutch and chain end stop for safety.

- **CAPACITIES AND LIFTS** - Rated loads from 1/8 to 2 Tons, with 10, 15 and 20 foot standard lifts. Other lifts available. Standard push button drop is 4 feet less than lift. CSA approved.
- **VOLTAGES** - 115/230 - single phase; 230/460, 208, 380, 415, 575, three - phase, 60 hertz standard, 50 hertz available.
- **TWO-SPEED HOIST MODELS** - Optional with 3 to 1 speed ratio, three-phase, single voltage only.
- **STANDARD FEATURES** - Panel plate for easy access to controls and motor leads, Five-pocket load sheave provides smoother operation and less chain wear, Mechanical overload protection device protects operator, hoist and support structures from damaging overloads, chain jamming, and reverse phasing, and chain end stop assembly for added safety.
- **LIMIT SWITCHES** - Adjustable to regulate upper and lower load travel. Brass nuts standard for improved repeatability and chain positioning.
- **OIL BATH TRANSMISSION** - Precision machined alloy steel gears run oil bath for longer, quieter operation.
- **NEMA 3R PUSH BUTTON STATION** - Ergonomic design fits operator's hand for thumb or two-handed operation. 24 Volt Control for operator's safety. 115 Volt Control available upon request.
- **FRAME** - Compact aluminum housing for portability and ease of installation.
- **ACCESSORIES** - Full line of accessories available.
- **CHAIN CONTAINER** - Standard on lifts up to 20 ft. single chain / 10 ft. double chain. Chain containers available for longer lifts.
- **LIFETIME WARRANTY**

### JLC Hoist Specifications

Capacity			Model Number	Number of Chains	Motor HP	Lift Speed (FPM)		Headroom (In.)*	Housing Dimensions			Net Weight (lbs)**
(lbs)	(Kg) <sup>+</sup>	(tons)				Single	Two		H	W	L	
250	125	1/8	JLC-0232	1	1/4	32	10.7	18-1/8	8-11/16	8-11/16	24-1/8	63
500	250	1/4	JLC-0516	1	1/2	16	5.3	18-1/8	8-11/16	8-11/16	24-1/8	63
500	250	1/4	JLC-0532	1	1/2	32	10.7	18-1/8	8-11/16	8-11/16	24-1/8	75
1000	500	1/2	JLC-1016	1	1/2	16	5.3	18-1/8	8-11/16	8-11/16	24-1/8	75
1000	500	1/2	JLC-1032	1	1	32	10.7	18-1/8	8-11/16	8-11/16	24-1/8	88
2000	1000	1	JLC-2016	1	1	16	5.3	18-1/8	8-11/16	8-11/16	24-1/8	90
4000	2000	2	JLC-4008	2	1	8	2.7	20-13/16	8-11/16	8-11/16	24-1/8	100

<sup>+</sup> Metric rated option available. \* For hook and lug models only.  
<sup>\*\*</sup> Weight and dimensions for 10 ft. lift, single phase, top hook and lug suspension units.  
 Note: For complete dimensional data, refer to Coffing Dimensional Databook.



### Model SLC Hoist

#### Easy to Use

- Small, compact design-commercial & industrial applications.
- Lightweight and portable.
- Easy installation and maintenance. H4 duty cycle (300 motor starts /hour).

#### Special Mode Features

- Friction-type overload device prevents lifting excessive overloads.
- 10 pocket oblique lay liftwheel provides longer chain life and extended service.
- NEMA 4 industrial-rated pendant control.
- Lifetime, grease-lubricated gear train - less maintenance.
- Alloy load chain (zinc plated optional).
- Thermally protected motor prevents damage from possible overheating.
- D.C. braking system for positive load control.
- Durability - Epoxy powder-coat finish on rugged cast aluminum alloy frame.



Model Number	Capacity (lbs)	Number of Chains	Lifting Speed (FPM)	Voltage		Headroom (in.)	Housing Dimensions (in.)			Ship Weight (lbs)
				Standard	Optional		H	W	L	
SLC-0216	250	1	16	230/460-3-60	115-1-60	11-1/16	4-1/16	5-15/16	12-1/2	28
SLC-0224	250	1	24	230/460-3-60		11-1/16	4-1/16	5-15/16	12-1/2	28
SLC-0240	250	1	40	230/460-3-60		11-1/16	4-1/16	5-15/16	12-1/2	28
SLC-0316	300	1	16	230/460-3-60	115-1-60	11-1/16	4-1/16	5-15/16	12-1/2	28
SLC-0324	300	1	24	230/460-3-60		11-1/16	4-1/16	5-15/16	12-1/2	28
SLC-0340	300	1	40	230/460-3-60		11-1/16	4-1/16	5-15/16	12-1/2	28
SLC-0508	500	2	8	230/460-3-60	115-1-60	11-1/16	4-1/16	5-15/16	12-1/2	34
SLC-0512	500	1	12	230/460-3-60	115-1-60	11-1/16	4-1/16	5-15/16	12-1/2	28
SLC-0516	500	1	16	230/460-3-60		11-1/16	4-1/16	5-15/16	12-1/2	28
SLC-0520	500	2	20	230/460-3-60		11-1/16	4-1/16	5-15/16	12-1/2	34
SLC-0524	500	1	24	230/460-3-60		11-1/16	4-1/16	5-15/16	12-1/2	28
SLC-0608	600	2	8	230/460-3-60	115-1-60	11-1/16	4-1/16	5-15/16	12-1/2	34
SLC-0612	600	2	12	230/460-3-60		11-1/16	4-1/16	5-15/16	12-1/2	34
SLC-0620	600	2	20	230/460-3-60		11-1/16	4-1/16	5-15/16	12-1/2	34
SLC-1008	1000	2	8	230/460-3-60	115-1-60	11-1/16	4-1/16	5-15/16	12-1/2	32
SLC-1012	1000	2	12	230/460-3-60		11-1/16	4-1/16	5-15/16	12-1/2	32

Note: Standard lifts 10 ft. Other lifts available. Standard push button drop is 4 ft. less than lift.

HOISTS & WINCHES

### EMC and EMW Models

**COFFING EMC & EMW Models** - Compact chain and wire rope hoists designed for a variety of light duty applications. These models feature thermally protected motors.



300 & 500 Lb.

500 lb.

- **CAPACITIES & LIFT** - Rated loads 300 and 500 pounds. 10 foot lift with 6 foot push button cord standard.
- **VOLTAGES** - 115V, single phase motors only.
- **SUSPENSION** - Swivel top and bottom hooks with safety latches standard.
- **POWER CORD** - Provided with grounded 3 prong plug for easy installation in any portability. Weighs less than 25 lb.
- **LIMIT SWITCHES** - Upper and lower limit switches on chain models and upper paddle limit switch on wire rope model regulates load travel.
- **ELECTROMAGNETIC BRAKE** - Quick acting for positive load control.
- **THERMAL MOTOR PROTECTION** - Standard to prevent overheating.
- **LIGHT DUTY OPERATION** - Rated for intermittent duty applications (10 minute run time per hour maximum).
- **ACCESSORIES** - LLC-05 chain container (shown) available for EMC models.
- **UL LISTED**
- **LIFETIME WARRANTY**

Capacity (lbs)	Model Number	Number of Chains	Standard Lift (ft.)	Motor HP	Lift Speed (FPM)	Headroom (in.)	Housing Dimensions (in.)			Net Weight (lbs)
							H	W	L	
300	EMC-300B	1	10	1/6	16	14 1/2	4 3/8	6 3/8	14 1/4	21
500	EMC-500B	2	10	1/6	8	16	4 3/8	6 3/8	14 1/4	24
500	EMW-500B	2-part wire rope	10	1/6	16	13 3/4	4 3/8	6 3/8	14 1/4	19

Note: For complete dimensional data, refer to Coffing Dimensional Databook.



## Manual Chain Hoists

### LHH Hand Chain Hoist

**Coffing LHH Models** - Stamped steel hand chain hoists are an excellent low cost option in the Coffing line. The compact, lightweight design is ideal for construction and contractor applications where portability and easy rigging are critical.

- **Capacities & Lift** - Rated loads from 1/2 to 20 Tons in stock with standard lifts of 10, 15 and 20 feet. Standard hand chain drop is 2 feet less than lift. Other lifts and hand chain drops, and 25-50 Ton models are available - consult the factory.
- **Compact and Lightweight** - Designed for portability and easy installation. Compact gear housing provides low headroom.
- **Easy To Operate** - Lubricated bearings and bushings, bearing-mounted pinions, and heat-treated spur gearing ensure smooth and efficient operation with minimal effort.
- **Safety & Load Control** - Mechanical load brake engages instantly for precise load holding and positioning. 360° swivel hooks with safety latches for positive load engagement.
- **Durable** - Through hardened load chain provides added strength and wear resistance for greater chain life. Stamped steel housing withstands rugged conditions.
- **Easy To Maintain** - Designed for easy inspection and maintenance. Hoist can be dismantled easily with simple hand tools.
- **Lifetime Warranty**



LHH Chain Hoist Specifications

Capacity		Model	PIN # 10 Ft. Lift **	PIN # 15 Ft. Lift **	PIN # 20 Ft. Lift **	Strands of Load Chain	Min. Headroom (in.)	Hand Chain Overhaul / 1 Ft. Lift	Avg. Pull to Lift Rated Load (lbs)	Net Weight (lbs)
Lbs.	Tons									
1000	1/2	LHH-1/2	LHH0101001	-	-	1	10-1/4	32	55	19
2000	1	LHH-1	LHH0201001	LHH0201501	LHH0202001	1	11-13/16	56	53	25
3000	1-1/2	LHH-1-1/2	LHH0301001	LHH0301501	LHH0302001	1	13-9/16	75	65	36
4000	2	LHH-2	LHH0401001	LHH0401501	LHH0402001	1	15	75	74	45
6000	3	LHH-3	LHH0601001	LHH0601501	-	1	17-1/8	95	84	66
10000	5	LHH-5	-	-	-	3	22-5/8	203	79	75
16000	8	LHH-8	-	-	-	3	32-1/2	312.5	77	158
20000	10	LHH-10	-	-	-	3	32-1/2	312.5	95	158
24000	12	LHH-12	-	-	-	5	50-5/8	526	84	328
30000	15	LHH-15	-	-	-	5	50-5/8	526	103	328
40000	20	LHH-20	-	-	-	6	52-3/8	312.5x2	99x2	535
50000	25*	LHH-25	-	-	-	8	52-7/8	416.7x2	97x2	680
60000	30*	LHH-30	-	-	-	10	65	526.3x2	104x2	945
80000	40*	LHH-40	-	-	-	14	73-5/16	714.3x2	101x2	1400
100000	50*	LHH-50	-	-	-	20	77-5/8	1000x2	104x2	1840

\* 25, 30, 40 and 50 Ton Models available by Special Order.  
 \*\* Standard lifts shown - Other lifts available LHH-20 through LHH-50 models have two hand chains.



### LSB-B Ratchet Lever Hoist



**Coffing LSB-B Model** - Stamped steel ratchet lever hoists are lightweight and durable.

The LSB-B's low handle effort and 360° rotating handle make it easy to operate, and the one-handed free chaining mechanism provides easy rigging. The LSB-B is ideal for construction and commercial applications.

- **Capacities & Lift** - Rated loads of 3/4, 1-1/2, 3, and 6 Tons, with 5, 10, 15 and 20 foot standard lifts. Other lifts available.
- **Optional Load Limiter** - Load Limiter alerts operator of a possible overload by allowing the handle to rotate without lifting the higher-than capacity load. The load limiter can be field-installed.
- **Rugged and Lightweight** - Impact resistant, stamped steel housing withstands rigorous use. Compact design is portable and easy to rig.
- **Low Handle Effort** - Double reduction gearing and short, cushioned-grip handle provide easy operation with minimal handle effort.
- **360° Rotating Handle** - Provides versatile rigging options when used in confined spaces.
- **Easy Free Chaining** - State-of-the-art free wheeling mechanism allows quick and easy one-handed take-up and positioning of slack chain.
- **Positive Load Control** - Enclosed screw-and-disc brake type load brake stays clean and dry for positive load positioning. Latches on hooks provide positive load engagement.
- **Options** - Shipyard hook available for 1-1/2 Ton and 3 Ton Models.
- **Lifetime Warranty**

Capacity		Model Number *	Lift (ft.) *	Strands of Load Chain	Min. Distance between Hooks (in)	Handle Length (in)	Average Handle Effort (lbs)	Net Weight (lbs)
Lbs	Tons							
1500	3/4	LSB-1500B-5	5	1	11-5/8	9-1/4	46	12
1500	3/4	LSB-1500B-10	10	1	11-5/8	9-1/4	46	14
1500	3/4	LSB-1500B-15	15	1	11-5/8	9-1/4	46	16
1500	3/4	LSB-1500B-20	20	1	11-5/8	9-1/4	46	18
3000	1-1/2	LSB-3000B-5	5	1	13	14-9/16	59	21
3000	1-1/2	LSB-3000B-10	10	1	13	14-9/16	59	24
3000	1-1/2	LSB-3000B-15	15	1	13	14-9/16	59	27
3000	1-1/2	LSB-3000B-20	20	1	13	14-9/16	59	30
6000	3	LSB-6000B-5	5	1	16-5/16	14-9/16	75	35
6000	3	LSB-6000B-10	10	1	16-5/16	14-9/16	75	40
6000	3	LSB-6000B-15	15	1	16-5/16	14-9/16	75	45
6000	3	LSB-6000B-20	20	1	16-5/16	14-9/16	75	50
12000	6	LSB-12000B-5	5	2	22-3/4	14-9/16	76	67
12000	6	LSB-12000B-10	10	2	22-3/4	14-9/16	76	75
12000	6	LSB-12000B-15	15	2	22-3/4	14-9/16	76	88
12000	6	LSB-12000B-20	20	2	22-3/4	14-9/16	76	99

\* Standard Lifts shown. Other lifts available.

HOISTS & WINCHES

### TB-602 Mini-Hoist



- **550 lbs. Capacity**
- **5 Ft. Standard Lift**
- Plated Load Chain
- Weston-type Load Brake
- Rubber Hand Grip for better comfort and security
- Lightweight Design (only 6 lbs.) for ease of Portability
- Use in confined conditions with one-hand operation
- Forged Upper and Lower Hooks with Latches
- Impact Resistant, all-steel frame, gear case and cover
- Hardened link-type steel load chain for strength and long wear
- Free Wheeling feature serves to quickly attach the load
- Metric Rated



## Wire Rope Lever Tool



GT-1300-32



GT-2000-65



GT-3500-32

**COFFING GT MODELS** - Designed for heavy-duty pulling, rigging, dragging, stretching and lifting applications.

Its versatility and ability makes it perfect for use in the construction and transportation industries, as well as hundreds of other industrial applications.

Coffing GT Models are lightweight, compact and built tough for long life and trouble-free service.

**CAPACITIES** - Rated loads from 1 to 3 tons. 32 ft. of wire rope on 1 and 3 Ton models / 65 ft. of wire rope on 2 ton models.

**SMOOTH OPERATION** - Large surface area of dual clamping jaws provide an evenly distributed grip for smooth operation and low wear.

**LIFETIME WARRANTY**

GT Wire Rope Lever Tool Specifications

Model	Rated Capacity (tons)	Product Code	Standard Wire Rope Length (ft.)	Wire Rope Diameter (in.)	Lever Length Extended (in.)	Lever Length Retracted (in.)	Rope Advance + (in.)	Overall Dimensions (in.)	Net Weight (lbs)*	Net Weight (lbs)**
GT-1300-32	1	0013	32	5/16	29.1	21.3	1.30	19.7 x 9.1 x 4.0	35	18
GT-2000-65	2	0020	65	7/16	29.1	21.3	1.45	24.8 x 13.0 x 5.9	79	40
GT-3500-32	3	0035	32	5/8	29.1	21.3	0.78	28.6 x 12.8 x 7.0	94	66

† Per full stroke at rated load. \* Wire Rope included \*\* Less Wire Rope.



### AMH Hand Chain Hoist

AMH Hand Chain Hoists offer the ideal lifting solution from 1/4 to 30 metric ton capacity for construction and maintenance applications where portability and easy rigging are critical.

- **Increased efficiency** on MA series by sealed ball bearings on the chain wheel, additional pinion shaft bearing and close tolerances.
- **Bolted Hook blocks allowing complete hook inspection** per ASME B30 safety codes (Except MM003 is riveted).
- **Lightweight and Durable** all steel construction with powder coated finish and plated external components to resist corrosion.
- **Premium USA-Made Grade 80 Zinc plated alloy load chain.**
- **Operation from any angle below** due to radius hand chain cover.
- **Double pawl disc type mechanical load brake** is Self adjusting and insures positive load control (MM003 has single pawl).
- **Double roller chain guide** insures tracking and is open for inspection and cleaning of debris.
- **Optional Overload Protection (V)** is by one directional clutch that will only slip in the lift direction insuring that any load lifted can be lowered. (Not available on MM003).
- **Meets: ASME/ANSI B30.16, OSHA, NASA-STD-8719.9, EU Directives: 98/37/EC and ATEX rated II 3 GD c IIB 50 C X for limited use in Hazardous Environments.**



### AMH Lever Chain Hoist

AMH Hand Chain Hoists offer 1/4 to 10 Ton capacities of rugged construction having 360 handle operation and free chaining for easy rigging and in tight places. Ideally suited for lifting or pulling during construction and maintenance operations where access is limited.

- **More Capacity** for more work and better value.
- **Bolted Hook blocks allowing complete hook inspection** per ASME B30 safety code (ML003 and ML005 are riveted).
- **Lightweight and Durable** all steel construction with powder coated finish and plated external components to resist corrosion.
- **Premium USA-Made Grade 80 Zinc plated alloy load chain.**
- **Horseshoe shape chain guide** allows operation in any orientation.
- **Double pawl disc type mechanical load brake** is Self adjusting and insures positive load control (ML003 and ML005 are single pawl).
- **Optional Overload Protection (V)** is by one directional clutch that will slip in the lift direction insuring that any load lifted can be lowered. (Not available on ML003 and ML005).
- **Meets: ASME/ANSI B30.21, OSHA, NASA-STD-8719.9 EU Directives: 98/37/EC and ATEX rated Ex II 3 GD c IIB 50° C X for limited use in Hazardous Environments.**



HOISTS & WINCHES

Capacity		Model/Pin #	Falls	Headroom Min. (In.)	Pull @ WLL Avg. (lbs)	Net Weight (lbs)	
Lbs.	Tons					Extra Lift/Ft	8/10Ft Lift
8 Ft. Lift							
550	1/4t	MM003-08-06	1	9.1	26	0.44	7.7
10 Ft. Lift							
1100	1/2t	MA005-10-08	1	13.8	56	0.74	20
2200	1t	MA010-10-08	1	15.1	64	0.92	26
3300	1.5t	MA015-10-08	1	17.4	69	1.12	36
4400	2t	MA020-10-08	1	19.1	77	1.30	44
6600	3t	MA030-10-08	1	21.8	84	1.88	72
8800	4t	MA040-10-08	2	27.1	67	2.88	93
11000	5t	MA050-10-08	2	27.1	84	2.88	93
13200	6t	MA060-10-08	3	27.2	66	4.13	136
16500	7.5t	MA075-10-08	3	27.2	83	4.13	136

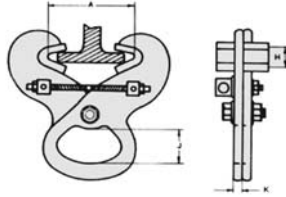
\*Notes: Additional lift and hand chain lengths can be specified. The standard hand chain drop is 2 Ft. less than lift. 15 Ft. & 20 Ft. Lifts also standards.

WLL Capacity				Model/Pin #		Falls	Headroom Min. (in.)	Handle Length Lg. (in.)	Pull @ WLL Avg. (lbs)	Net Weight (lbs)	
Max Lbs	US Tons	Metric Tons	Min. Lbs (1)	5 Ft. Lift	10 Ft. Lift					Extra Lift/Ft	10 Ft Lift
550	1/4*	0.25	33	ML003-05	ML003-10	1	8.5	6.2	28	0.25	4.4
1100	1/2*	0.5	44	ML005-05	ML005-10	1	10.0	7.1	40	0.36	7.7
1760	3/4*	0.8	44	LA008-05	LA008-10	1	13.4	10.5	47	0.54	14.9
2200	1*	1.0	44	LA010-05	LA010-10	1	13.4	12.1	51	0.54	15.3
3750	1-3/4	1.6	70	LA016-05	LA016-10	1	15.7	14.0	66	0.74	24.1
4500	2-1/4	2.0	88	LA020-05	LA020-10	1	18.1	14.0	66	0.92	36.2
5500	2-3/4	2.5	110	LA025-05	LA025-10	1	19.1	14.0	74	1.25	37.9
7000	3-1/2	3.2	141	LA032-05	LA032-10	1	19.1	14.0	74	1.25	37.9
14000	7	6.3	278	LA063-05	LA063-10	2	25.2	16.5	74	3.00	66.3
20000	10	9.0	396	LA090-05	LA090-10	3	28.7	16.5	76	4.50	110.6

\*Notes: 1. Minimum capacity is the load required to set the automatic brake. 2. Additional lifts are available. - 15 ft & 20 ft lifts are also considered standard.



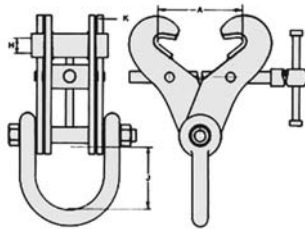
## Beam Clamps



### Permanently Fixed Adjustable Girder Clamps

- Designed for light industrial applications.
- Ideal for permanent overhead anchor point above machinery or equipment.
- Positive Grip on flange.
- Lightweight one piece adjustable design.
- For use at 0 degrees from vertical.

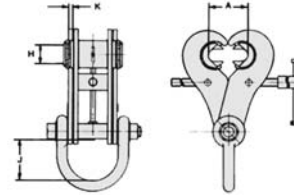
Model	WLL @ 0° Vertical	Jaw Grip Adjustment inch min.-max	Jaw Aperture inch	Inside Shackle Crown to Spacer (in.)	Average Weight (lbs)	
PFC1	2240	1016	3 - 7-1/2"	7/8"	1-1/2"	4.6
PFC2	4480	6096	3 - 7-1/2"	7/8"	1-1/2"	5.5
PFC3	6720	8128	3 - 7-1/2"	7/8"	1-1/2"	8.5



### Fixed Jaw Adjustable Girder Clamps

- One piece adjustable design.
- Used for lifting, pulling or as an anchor point.
- No tools required for mounting/removal.
- Integrated lifting shackle.
- Positive Grip left/right threaded adjusting bar.
- Designed with maximum safe jaw grip adjustment.
- For use at up to 15 degrees from vertical.
- **Approved for Personnel tie-off use.**

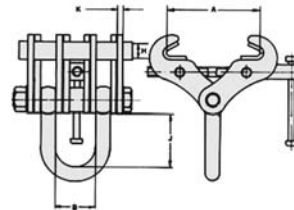
Model	WLL @ 0-15° Vertical		Jaw Grip Adjustment inch min.-max	Jaw Aperture (in.)	Inside Shackle Crown to Spacer Inch	Average Weight (lbs)
	Lbs	Kg				
S1	4480	2032	3 - 7-1/2"	7/8"	3-3/4"	9
S2	6720	3048	3 - 7-1/2"	7/8"	3-3/4"	11
S2A	6720	3048	3 - 7-1/2"	7/8"	3-3/4"	18
S3	8960	4064	6-10"	7/8"	3-7/8"	24
S3X	11200	5080	3 - 7-1/2"	7/8"	4-1/8"	22
S3A	11200	5080	6-12"	1-5/8"	4-1/8"	33
S4S	13440	6096	8-18"	1-5/8"	4-1/8"	41
S4A	22400	10160	8-18"	1-5/8"	4-1/2"	62
S12	33601	15241	8-18"	2"	5-7/8"	109
S14	33601	15241	16-24"	2-1/2"	5-7/8"	129



### Swivel Jaw Adjustable Girder Clamps

- One piece adjustable design.
- Used for lifting, pulling an anchor point.
- Added benefit of horizontal jaw adjustment.
- Full length/width of swivel jaw anchors on flange Integrated lifting shackle .
- Positive Grip left/right threaded adjusting bar.
- For use at up to 15 degrees from vertical.
- **Approved for Personnel tie-off use.**

Model	WLL @ 0-15° Vertical		Jaw Grip adjustment inch min.-max	Jaw Aperture (in.)	Inside Shackle Crown to Spacer Inch	Average Weight (lbs)
	Lbs	Kg				
S5	6720	3048	3-1/2 - 12"	1"	3-3/4"	22
S5A	6720	3048	3-1/2 - 12"	1"	4-1/2"	31
S6	11200	5080	3-1/2 - 12"	1"	4-1/2"	31
S6A	11200	5080	3-1/2 - 12"	1"	4-1/2"	34
S11	22400	10160	3-1/2 - 12"	1"	4-1/2"	47

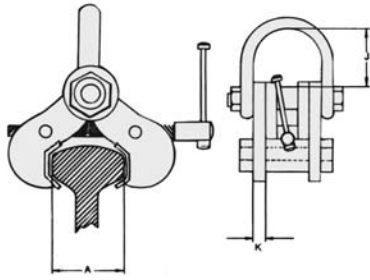


### Fixed Jaw Adjustable Girder Dog

- One piece adjustable design.
- Used for lifting, pulling as an anchor point.
- Enhanced by balanced distribution of side points.
- Maximum grip & hold and safety.
- No tools required.
- Positive Grip left/right threaded adjusting bar.
- For use at up to 15 degrees from vertical.
- **Approved for Personnel tie-off use.**

Model	WLL @ 0-15° Vertical		Jaw Grip Adjustment inch min.-max	Jaw Aperture (in.)	Inside Shackle Crown to Spacer inch	Inside Shackle Width (in.)	Average Weight (lbs)
	Lbs	Kg					
S15	44800	20320	8-18"	2"	8-1/8"	4-9/16"	144
S16	44800	20320	16-24"	2-1/2"	8-1/8"	4-9/16"	170
S17	56000	25400	8-18"	2"	8-1/8"	5-1/8"	166
S18	56000	25400	16-24"	2-1/2"	8-1/8"	5-1/8"	198
S19	67200	30480	8-18"	2-1/2"	8-1/8"	5-1/8"	203
S20	67200	30480	16-24"	3"	8-1/8"	5-1/8"	236

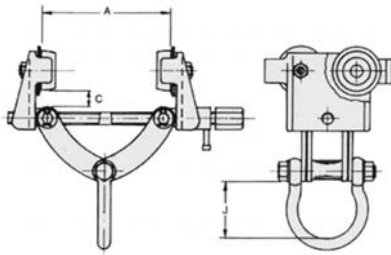




### Adjustable Universal Rail Lifting Clamp

- Designed to grip on all standard AREA Rail & Crane Rail.
- Positive Grip through left/right threaded adjusting bar.
- Lightweight & versatile adjustability.
- No tools required.
- Integrated lifting shackle.
- Ideal for construction, erection and maintenance.

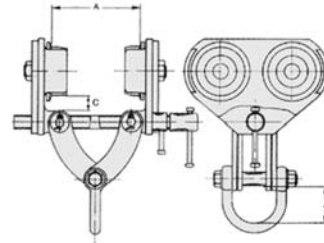
Model	WLL @ 0° Vertical		Jaw Grip Adjustment	Inside Shackle Crown to Spacer inch	Average Weight (lbs)
	Lbs	Kg			
R1	6720	3048	STD AREA Rail & Crane Rail	3-3/8"	13
R2	11200	5080		4-1/4"	21



### Adjustable Runway Beam Trolleys with Anti-Drop Plates

- Lightweight hand push, easy to use ball bearing wheels.
- Developed for lighter industrial applications.
- Adapts to beam width by turning left and right hand adjusting bar.
- Fitted with width adjustment locking mechanism.
- Wheel guarding anti-drop plates.
- No additional width adjusting tools required.
- Positive Grip Clamps.
- **Approval for personnel tie-off use\***

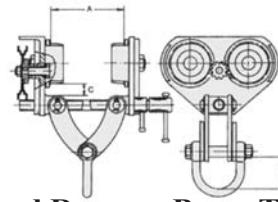
Model	WLL @ 0° Vertical		Width Adjustment inch min.-max	To Accommodate Beam Flange Thickness (max) (in.)	Inside Shackle Crown to Spacer inch	Average Weight (lbs)
	Lbs	Kg				
BA1	2240	1016	2-1/2"-8"	1"	4"	14
BA2	3360	1524	3"-8"	1"	4"	15
BA3	4480	2032	3"-8"	1"	4"	15



### Adjustable Runway Beam Trolley with Anti-Drop Plates

- One piece adjustable design.
- Hand push, easy to use, ball bearing wheels.
- Adapts to beam width by turning left/right hand threaded adjusting screw.
- Includes locking collar and wheel guard anti-drop plates for maximum safety.
- Integrated lifting shackle.
- No tools required.
- Ideal for temporary and permanent installations requiring speedy installation and use.
- **Approval for personnel tie-off use\***

Model	WLL @ 0° Vertical		Width Adjustment Inch Min-Max	To Accommodate Beam Flange Thickness (max) (in.)	Inside Shackle Width (in.)	Average Weight (lbs)
	Lbs	Kg				
B1	6720	3048	3"-8"	1"-1/8"	4-3/4"	50
B2	13440	6096	4"-12"	1"-1/4"	3-7/8"	113
B3	22400	10160	1"-1/2"	1"-1/2"	5 1/8"	158.7



### Geared Runway Beam Trolley with Anti-Drop Plates

- One piece adjustable design.
- Hand geared for easy movement of heavy loads.
- Ball bearing wheel movement.
- Integrated lifting shackle.
- Adapts to beam width by turning left/right hand threaded adjusting screw.
- Includes locking collar and wheel guard anti-drop plates for maximum safety.
- Ideal for temporary and permanent installations requiring speedy installation and use.
- **Approval for personnel tie-off use\***

Model	WLL @ 0° Vertical		Width Adj. Inch Min-Max	To Accommodate Beam Flange Thickness (max) inch	Inside Shackle Width (in.)	Average Weight (lbs)
	Lbs	Kg				
GBT1	6720	3048	3"-8"	1 1/8"	4"	68
GBT2	13440	6096	4"-12"	1 1/4"	4"	127
GBT3	22400	10160	4"-12"	1 1/2"	5 1/8"	183
GBT4	33600	20320	8"-18"	3"	8"	354
GBT5	44800	20363	8"-18"	3"	8 3/4"	440

HOISTS & WINCHES



## Trolleys & Other Accessories

### CTA Plain & Geared Trolleys

**COFFING CT Model** - Featuring enhanced design, and available in plain and geared models which can be modified to fit a wide range of beam sizes and styles. The CTA is designed to provide easy operation and superior performance in industrial lifting applications.

- **CAPACITIES** - Rated loads from 1/4 to 5 Tons in plain and geared models. Geared trolleys have standard 6 foot hand chain drop. Other hand chain drops available.
- **RUGGED** - Designed to provide superior performance and long, efficient service.
- **EASY OPERATION** - Lowest rolling effort of Coffing trolley lines.
- **UNIVERSAL MOUNTING** - Clevis accepts all Coffing hook-mounted hoists, or lug-mounted hoists attach directly to load pins.
- **ADJUSTABLE** - Trolley easily adjusts to fit any beam flange within range of adjustment.
- **WRAP-AROUND SIDE PLATES** - Act as safety lugs to increase operator safety act as bumpers to protect wheels.
- **DUAL TREAD WHEELS** - Fully machined wheels fit any taper or flat flanged beams within the range of adjustment. Wheels include permanently lubricated, shielded ball bearings for long life and low maintenance.
- **OPTIONS** - Spark resistant and corrosion resistant wheels available. Track clamps available on 1/4 to 4 Ton models.
- **LIFETIME WARRANTY**



Capacity		Model Number	Standard Beam Height	I-Beam Width (in.)	Minimum Radius Curves (in.)	Net Weight	
Lbs	Tons					Plain (P) (lbs)	Geared (G) (lbs)
500	1/4	CT-05P(G)	6-18	3.33-7.00	48	42	49
1000	1/2	CT-10P(G)	6-18	3.33-7.00	48	42	49
2000	1	CT-20P(G)	6-18	3.33-7.00	48	42	49
4000	2	CT-40P(G)	6-18	3.33-7.00	48	42	49
6000	3	CT-60P(G)	6-18	3.33-7.00	48	57	64
8000	4	CT-80P(G)	8-18	3.33-7.00	**	123	130
10000	5	CT-100P(G)	8-18	3.33-7.00	**	123	160

\* When ordering, specify "P" for plain trolley or "G" for geared trolley.  
 \*\* Standard model for straight track only.  
 Articulating model for 4 foot minimum radius curve available - consult factory.

### CBT Plain & Geared Trolleys

**COFFING CBT Models** - Available in plain and geared models, the CBT is the economical choice for most applications. The trolley features steel wrap around side plates, dual tread wheels and lifetime lubricated shielded ball bearings. All CBT's features combine to ensure you a trolley that is smooth rolling, versatile and reliable.



- **CAPACITIES** - Rated loads from 1/4 to 5 Tons (Metric Rated). In plain and geared models.
- **ECONOMICAL** - Excellent low cost choice for most manual and light-duty powered applications.
- **RUGGED** - Designed to provide superior performance and long, efficient service.
- **LOW ROLLING EFFORT** - Geared models have standard 6 foot hand chain drop. Other hand chain drops available.
- **UNIVERSAL HANGING CLEVIS** - Accepts most hook-mounted hoists.
- **ADJUSTABLE** - Trolley easily adjusts to fit any beam flange within range of adjustment, up to an 8.7" flange width.
- **WRAP-AROUND SIDE PLATES** - Lugs provide additional security to increase operator safety and act as bumpers to protect wheels.
- **DUAL TREAD WHEELS** - Will fit any tapered or flat beam flange within range of adjustment. Wheels include permanently lubricated, shielded ball bearings for long life and low maintenance.
- **LIFETIME WARRANTY**

Capacity*		Model Number**	Beam Height (in.)	I-Beam Width (in.)	Minimum Radius Curves (in.)	Wheel Tread Diameter (in.)	Net Weight (lbs)
Lbs	Tons						
500	1/4	CBTP-0025	4-24	2.0 - 8.7	27	2.36	19
1000	1/2	CBTP-0050	4-24	2.0 - 8.7	27	2.36	19
2000	1	CBTP(G)-0100	5-24	2.3 - 8.7	36	2.36	26
3000	1-1/2	CBTP(G)-0150	6-24	2.3 - 8.7	45	3.15	46
4000	2	CBTP(G)-0200	6-24	2.3 - 8.7	45	3.15	46
6000	3	CBTP(G)-0300	8-24	3.0 - 8.7	55	4.41	86
10,000	5	CBTP(G)-0500	10-24	3.5 - 8.7	70	4.92	130

\* Metric Rated. \*\* When ordering, specify "P" for plain trolley or "G" for geared trolley.



## Hand Winches

### Spur Gear Hand Winches

Industrial strength winches feature machine cut spur gears for accurate operation and long lasting service. Automatic brake models provide positive load control for lifting and lowering operations. Zinc and iridescent dichromate plated finish protects against corrosion. Bronze and ball bearings deliver smooth operations. Wire rope sold separately.



Spur Gear Hand Winch Specifications

Model	Load Rating 1st Layer	Load Rating Full Drum	Wire Rope Diameter	Full Drum Capacity	Gear Ratio	Force to Lift 1000 lb	Approx. Ship Weight
M401 *	500 lb	300 lb	3/16 in	60 ft	-	-	8 lb
M4022PB	1000 lb	500 lb	3/16 in	57 ft	2.85:1	41 lb	17 lb
M4032PB	1000 lb	500 lb	3/16 in	110 ft	2.85:1	41 lb	18 lb
M4312PB	2000 lb	1200 lb	1/4 in	59 ft	14.7:1	17 lb (Dbl Gear)	28 lb
M4412PB	2000 lb	1200 lb	1/4 in	120 ft	14.7:1	17 lb (Dbl Gear)	30 lb

\* Does not have automatic brake - Not suitable for lifting

### Worm Gear Hand Winches

Machine cut worm gears provide accurate operation and long lasting service. An enclosed oil bath provides continuous lubrication to minimize wear (except to Model 465). Automatic brake models provide positive load control for lifting and lowering operations. A durable paint finish is combined with zinc and iridescent dichromate plating to protect against corrosion. Bronze and ball bearings deliver smooth operation. Winches can be field or factory converted for vertical or wall mounting. Wire rope sold separately.



Worm Gear Hand Winch Specifications

Base Model	Brake Model	Load Rating 1st Layer	Load Rating Full Drum	Wire Rope Diameter	Full Drum Capacity	Gear Ratio	Force to Lift 1000 lb	Approx. Ship Weight
465	-	750 lb	400 lb	3/16 in.	59 ft	20:1	21 lb	12 lb
462	4622PB	1000 lb	500 lb	3/16 in	61 ft	15:1	34 lb	15 lb
482	482B	4000 lb	2500 lb	3/8 in	140 ft	26:1	31 lb	100 lb

Actual drum capacities may be 25-30% less, due to nonuniform winding.  
Tension in the wire rope will also affect drum capacity.  
Weight shown is for base model, add 6 lb for brake on 4622PB, add 13 lb. for brake on 482B.

### Series 4WM Worm Gear Hand Winches

Machine cut worm gearing delivers accurate operation and long lasting service. Hex drive and socket handle included. Winch can also be driven with a maximum 400 rpm drill motor. Cast Aluminum gearbox and drum provide lightweight strength and durability. An enclosed oil bath provides continuous lubrication. An internal mechanical brake provides positive load control for lifting and lowering operations. Bronze bearings deliver smooth operation. Wire rope sold separately.



Series 4WM Worm Gear Hand Winch Specifications

Model	Load Rating 1st Layer	Load Rating Full Drum	Wire Rope Diameter	Full Drum Capacity	Gear Ratio	Force to Lift 1000 lb	Approx. Ship Weight
4WM2	2000 lb	1200 lb	1/4 in	77 ft	32:1	14 lb	41lb
ED120BD	Electric drill-motor 400 rpm drive kit-120VAC with 1-1/8" hex socket						12 lb.

Actual drum capacities may be 25-30% less, due to nonuniform winding.  
Tension in the wire rope will also affect drum capacity.



## Special Purpose Winches

### The ATLAS Construction Winch



- **Machine cut worm gears** provide accurate operation and long lasting service.
- **Enclosed oil bath** provides continuous lubrication of gears to minimize wear. Oil seals keep oil in and dirt out.
- **Internal mechanical brake** provides positive load control for lifting and lowering operations.
- **Ball bearings** and self-aligning bronze bearings provide smooth, efficient operation.
- **Pressure plate** applies pressure to drum and wire rope to help maintain uniform winding. Not available on clutch models.
- **Dual function cable anchor** for quick disconnect of wire rope with swaged ball fitting, or recessed cable anchor with set screw for wire rope with unfinished end.
- **Clutch model** allows operator to manually disengage the drum to rapidly unwind the wire rope. **Clutch models do not include pressure plates.**

Mounting options include floor, wall or ceiling.

- **Cast aluminum construction** for lightweight strength.
- **Corrosion resistant** durable paint finish protects against corrosion in harsh environments.
- **Large diameter drums** minimize wear to the wire rope and help extend its life.
- **2 Year Limited Warranty**

Model	Description	Load Rating 1st Layer	Load Rating Full Drum	Wire Rope Diameter	1st Layer Line Speed	Full Drum Capacity	Approx. Ship Weight
4WP2T8	115/1/60 VAC 16 ft Pendant	2000 lb	800 lb	1/4 in	8 fpm	280 ft	101 lb
4WP2T8-PN	Pneumatic - with Controls	2000 lb	800 lb	1/4 in	8 fpm	280 ft	95 lb
4WP2D8	115/230/460 volt / 3 phase	800/1500 lb	330/600 lb	1/4 in	26/40 fpm	280/190 ft	100 lb
Actual drum capacities may be 25-30% less, due to nonuniform winding. Tension in the wire rope will also affect drum capacity.							

### Portable Davit Cranes



- Crane rotates 360°
- Adjustable Boom with 2 different positions for operation. Series 5110 and 5124 have booms that telescope to 4 different lengths and adjust in height while under load with ratchet style screw-jack.
- Crane breaks down for storage and transport.
- The models shown are Spur Gear Hand Winch Operated. Series 5110 and 5124 have worm gear hand winch or electric winch driven options.
- Quick Disconnect Anchor for quickly attaching or removing wire rope equipped with a swaged ball fitting.
- Independent bases are sold separately. Bases are available in Pedestal, Socket or Wall mount styles as well as Wheel bases. Base installation is the purchaser's responsibility. Thern recommends consulting a civil engineer or other qualified professional.
- Wire rope assemblies are sold separately and are available in galvanized or stainless steel with the swaged ball fitting attached.

#### Spur Gear Hand Winch Driven Portable Davit Crane Specifications

Model	Description	Load Rating Max.	Load Rating Extended	Wire Rope Diameter	Hook Reach	Approx. Ship Weight	Lift below floor level (min - max)
5122M1	Hand winch operated	500 lb	500 lb	3/16 in	35 - 42 in	68 lb	9 - 35 ft
5110M1	Hand winch operated	1000 lb	500 lb	1/4 in	36 - 66 in	160 lb	1 - 45 ft
5124M1	Hand winch operated	2000 lb	1000 lb	1/4 or 5/16 in	28 - 81 in	253 lb	0 - 44 ft
Hook Reach and Lift Below Floor Level vary depending on boom position and base configuration.							



## Power Winches

### Series 4HS Helical/Spur Gear Power Winches

The 4HS Series combine helical/spur gearing for heavy duty pulling or lifting applications involving large loads and long distances. Winches are driven by 230/460 volt three phase, 60 cycle, flange mounted, TEFC severe duty, reversible, class F insulated, continuous duty brake motors. Controls are sold separately. Other models and custom modifications are available.

Helical/Spur Gear Power Winch Specification



Model	Motor Hp	Load Rating (1st Layer)	Load Rating (Full Drum)	Wire Rope Diameter	Full Drum Capacity	Full Drum Line Speed	Approx. Ship Weight
4HS6M	7.5	6600 lb	4000 lb	1/2 in	500 ft	64 fpm	645 lb
4HS11M	10	11,000 lb	5800 lb	5/8 in	760 ft	51 fpm	1160 lb
4HS16M	10	16,100 lb	8300 lb	3/4 in	880 ft	38 fpm	1633 lb
4HS26M	20	26,000 lb	15,000 lb	1 in	830 ft	45 fpm	3343 lb
4HS40M	40	40,000 lb	22,900 lb	1-1/4 in	1030 ft	59 fpm	5799 lb
4HS56M	50	56,200 lb	35,500 lb	1-1/2 in	1140 ft	47 fpm	9479 lb
Actual drum capacities may be 25-30% less, due to nonuniform winding. Tension in the wire rope will also affect drum capacity.							

HOISTS & WINCHES

### Series 477 Helical/Worm Gear Power Winches

- Helical/worm gearing delivers dependable operation.
- Cast aluminum construction provides lightweight strength and durability.
- An enclosed oil bath provides continuous lubrication.
- An internal mechanical brake provides positive load control for lifting and lowering operations.
- Ball bearings deliver smooth operation.
- Wire rope sold separately.



Series 477 Helical/Worm Gear Power Winch Specifications

Model	Description	Load Rating 1st Layer	Load Rating Full Drum	Wire Rope Diameter	1st Layer line Speed	Full Drum Capacity	Approx. Ship Weight
4771	115/1/60 VAC, with controls	2000 lb	1200 lb	5/16 in	13 fpm	90 ft	88 lb
4771DC	12 VDC, with controls	2000 lb	1200 lb	5/16 in	13 fpm	90 ft	105 lb
4771PN	Pneumatic 80 cfm at 100psi	2000 lb	1200 lb	5/16 in	13 fpm	90 ft	70 lb
4771HY	Hydraulic 4 gpm at 1000psi	2000 lb	1200 lb	5/16 in	13 fpm	90 ft	72 lb
Actual drum capacities may be 25-30% less, due to nonuniform winding. Tension in the wire rope will also affect drum capacity. For all models except 4771, drum speed is based on rated load, actual speed will vary with load weight and power supply. For Model 4771PN, ratings are at 100 psi. For Model 4771HY, ratings are at 1000 psi. Controls and hoses for models 4771PN and 4771HY sold separately.							