

Winches & Bars

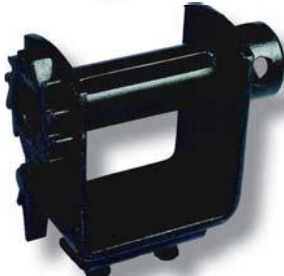
Winches



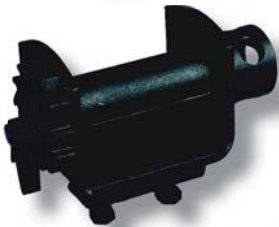
Standard Weld-In-Place
Part No. 5510



Low Profile Weld-In-Place
Part No. 5511



Standard Portable
(2 Set Screws)
Part No. 5513



Low Profile Portable
Part No. 5514

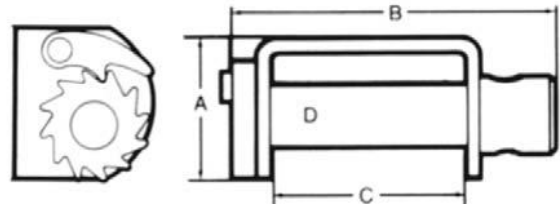


Standard Sliding
Part No. 5515



Deep Storable Sliding
Part No. 5516

Part Number	A	B	C	D	Weight (lbs)
5510	5-1/2"	7-7/8"	4-7/8"	2"	8.8
5511	4-1/8"	7-7/8"	4-7/8"	2"	7.8
5513	5-1/2"	7-7/8"	4-7/8"	2"	9.5
5514	4-1/8"	7-7/8"	4-7/8"	2"	9.2
5515	5-1/2"	7-7/8"	4-7/8"	2"	9.5
5516	6-7/8"	7-7/8"	4-7/8"	2"	10.5



Steel Slider Track - Length 6 ft
(For use with 5515 & 5516)
Part No. 7514



Winch Bar
Painted & Knurled Handle
Part No. 5542



Winch Bar
Chrome Combination
Part No. 5543



Chrome Winch Bar
Part No. 5544



CARGO CONTROL